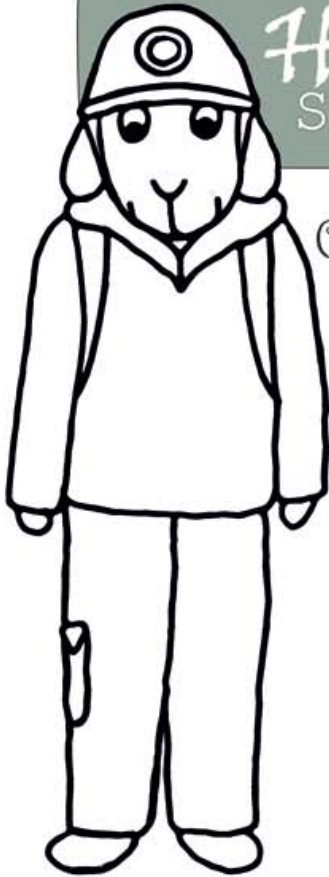
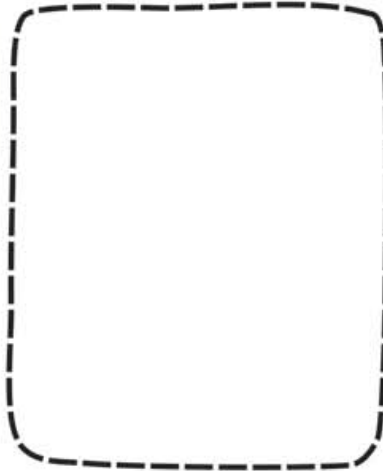


name: _____

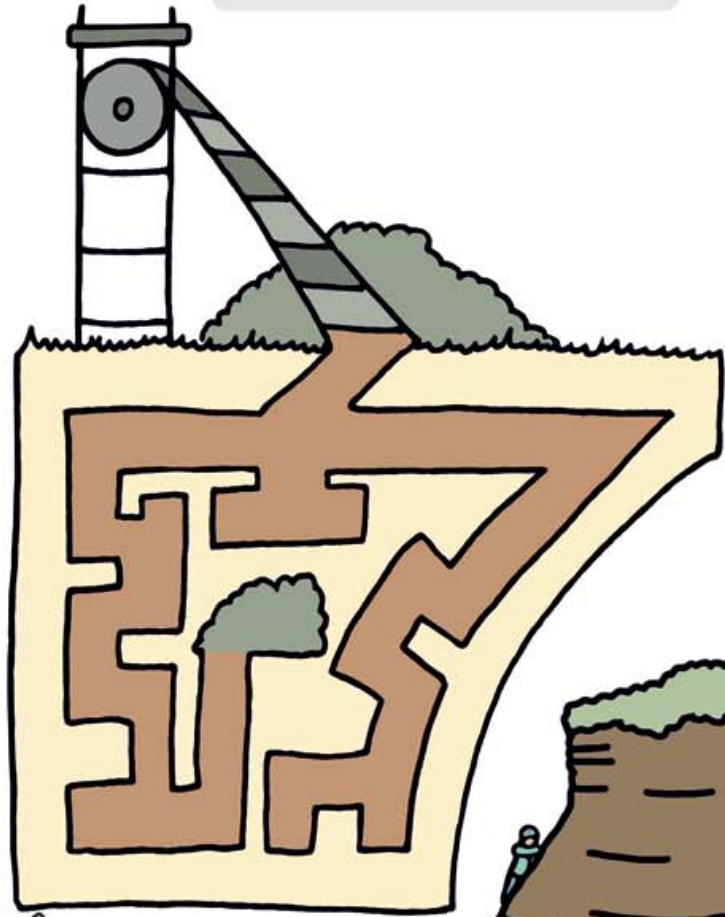


Honister SLATE MINE

Colour Hatty in before she goes on her mine tour underground.



Draw something you would like to find in the mine.

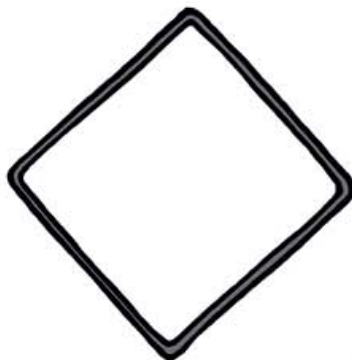


Find the path to bring the slate up the mine.



Odd one out:

There are 2 objects that do not belong, cross these odd ones out.



Draw & Colour:
Copy and colour in the mining sign.

Honister Slate Mine is located at the head of Honister Pass in the centre of The Lake District. It produces Westmorland green slate. The slate is over 450 million years old! Go on an exciting underground tour into the mine. You can have a meal at the Ski Hi Café.



How many climbers are on the via ferrata?



10+

Via Ferrata

Via ferrata is Latin for "iron way". The metal cables make climbing Fleetwith Pike easier and safer.

